

## THE PIXMA PRO RANGE

**Canon**  
advanced simplicity®



Pure professional performance, archival quality photos  
in black and white or colour.

# PIXMA

**Canon Australia Pty. Ltd.** Freecall: 1800 021 167  
Facsimile No: + 61 2 9805 2632  
**Canon New Zealand Limited** Freecall: 0800 222 666  
Facsimile No: + 64 9 489 0380  
canon.com.au  
canon.co.nz  
canon.com.au/pixmapro

Please note images are for illustrative purposes only.

Canon is a registered trademark of Canon Inc. and 'advanced simplicity' is a registered trademark of Canon Australia Pty Limited. PIXMA and the PIXMA logo are trademarks of Canon Inc. Microsoft, Windows and the Windows logo are registered trademarks of Microsoft Corporation in the United States and in other countries. All other trademarks are the property of their respective owners.

CAN1070

# PIXMA PRO9500

The PIXMA Pro9500 is pure professional performance, giving you outstanding quality photos in black and white or colour.

## Archival Quality

The Pro9500 has pigment-based inks which is a first in the PIXMA Pro series. With the Canon Semi-Gloss Inkjet Photo Paper SG-201, colour prints framed under glass last for 104 years and black and white last for over 200 years.<sup>^</sup> LUCIA inks also shorten colour stabilising time dramatically which is important for proofing purposes.



## 10 Individual Ink Tanks

It has 10 colours of ink which improves photo expressiveness by using colour space expansion and supports professional monochrome printing. The FINE print-head technology allows precise ejection of microscopic ink droplets and up to 4800 x 2400 dpi producing outstanding photos.

In addition to the six colours of Cyan, Magenta, Yellow, Photo Cyan, Photo Magenta, and Black, the Pro9500 also has four additional colours. Green ink increases the colour gamut of green. Red ink increases the gamut of colours from yellow to orange and red. Grey ink and Matte Black ink enable professional monochrome printing. With a total of 10 colours of ink, there are no limits to your creativity.

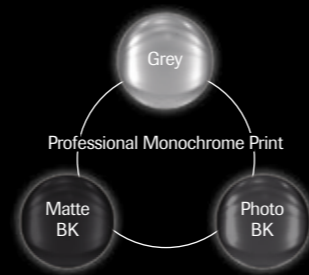


All 10 individual ink tanks can reside in the print-head at all times, saving time and ink by eliminating the need to swap out tanks before printing. Now, there's no need to worry about which ink goes with which project.



## MONOCHROME PRINT QUALITY

Grey ink, which is also a first in the PIXMA series, reduces the graininess and lines that are the result of light ink, stabilises grey balance and reduces metamerism. Another first is the use of Matte Black ink which provides high density printing even on Fine Art Paper. Photo Black ink expands the width of monochrome gradations, enabling high-contrast photos with a vibrant, three-dimensional feel. These black inks enable the Pro9500 to produce monochrome prints that would impress the best professional photographer.



## THE THREE EFFECTS OF GREY INK

### 1. Reduced graininess and lines

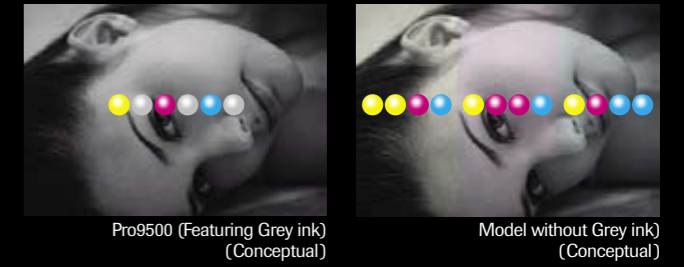
Grey ink, which is lighter in density than black, reduces graininess from mid-density areas to highlighted areas. Using Grey ink allows richly expressive photos while reducing unwanted lines.



# PIXMA PRO9500

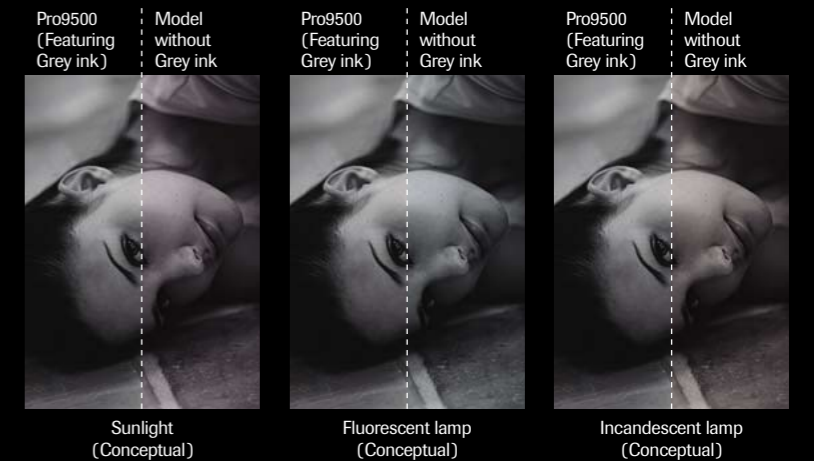
## 2. Stabilised grey balance

Because previous ink systems used Cyan, Yellow and Magenta coloured ink to express light grey areas, colour shifts are generated from the differences in the amount of ink used. For example, sometimes cyan is prevalent, while at other times, magenta is prevalent. With the Pro9500, using grey ink gives a stable grey balance by reducing colour shifts.



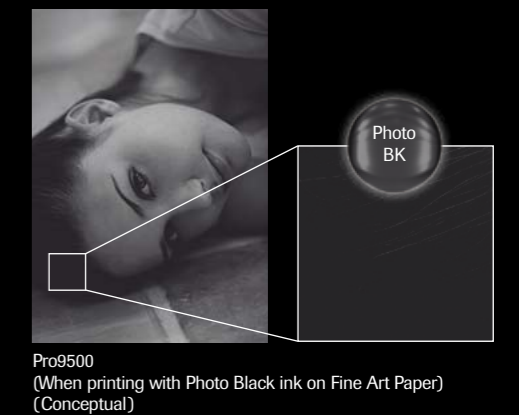
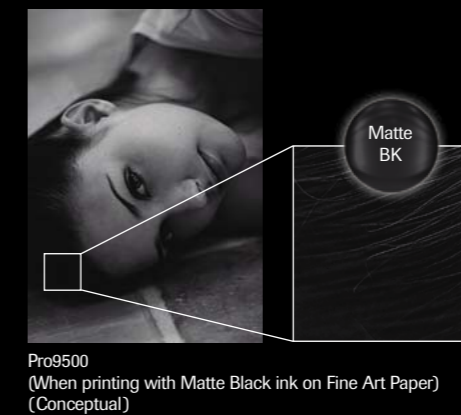
## 3. Reduction in metamerism

Metamerism is a phenomenon where colours appear to be different under different light sources. In other ink systems, the grey areas are created by combining Cyan, Magenta, and Yellow. Doing so causes the colour to change depending on the light source because of the differences in light reflectivity of each colour. By using lesser amounts of colour ink and more grey ink in the grey areas, the reflective properties become stabilised and the metamerism is reduced.



## MATTE BLACK INK EFFECT

The new media called Fine Art Papers provide an artistic quality to art work and a unique feel. With the Pro9500, Matte Black ink allows reproduction of dark areas with more details and less blurs, even when printing on this type of paper. This enables expressive photos with increased contrast.



# PIXMA PRO9000

## THE PIXMA PRO9000

True to life colour photos for serious photographers. The professional camera of choice has a printer to match, the Canon PIXMA Pro9000, an A3+ photo printer engineered with the DNA of EOS, an innovation that ensures camera and printer work together like never before.

## HIGH QUALITY

### The professional photo printer

The PIXMA Pro9000 photo printer gives your prints bright colouration and a glossy finish to beautifully reproduce the camera-captured colours, lights and facial expressions. The Pro9000 features an 8-colour individual ink system that includes red and green inks allowing a wide colour space and vivid colour reproduction. This enables you to print photos with a glossy finish and three-dimensional feel.



The Pro9000 uses a FINE print-head that ejects 2pl ink droplets and combined with high resolution of 4800 x 2400 dpi provides photo quality which is virtually grain-free, with no substantial colour shifts or smearing<sup>2</sup>. The Pro9000 has been designed for professionals who demand prints with vibrant colours and a high-gloss finish.

## LONG LASTING

### A new system to preserve long-lasting beauty of photos

A beautiful photograph is something worth keeping forever. Now with ChromaLife100, the photos you print at home or in studio can maintain all their vibrancy and colour for 100 years<sup>6</sup>. The combination of genuine Canon ChromaLife100 ink and selected Canon photo papers lets you print long-lasting photos of unrivalled quality. Thanks to ChromaLife100, the precious memories in your albums will still be bright and fresh a century from now.

Canon has a range of specialty photo papers that are suitable for virtually every photo size and use. To ensure you gain all the long-lasting benefits of ChromaLife100, make sure you choose Canon's Photo Paper Pro, Photo Paper Plus Glossy, Photo Paper Plus Semi-gloss or Glossy Photo Paper.

## HIGH SPEED

### High-density FINE print-head enables fast printing

The Pro9000 FINE print-head has a total of 6,144 (768 nozzles x 8 colours), so it is capable of printing bordered A3+ (13" x 19")<sup>†</sup> photographs in approximately 83 seconds<sup>7</sup>.

<sup>†</sup> 28 x 36cm (11" x 14") photo on A3+ photo paper.



# PIXMA PRO RANGE

## ADVANCED MEDIA HANDLING

The PIXMA Pro range advanced media handling gives you the option to extend your creativity further and provides a more versatile solution with your printer.

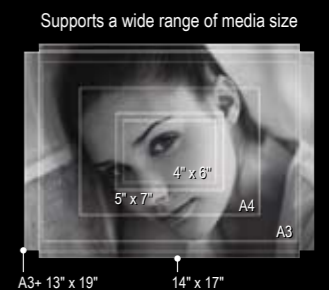
### CD/DVD printing

Use the CD-LabelPrint software to create your own label designs and print them directly onto printable CDs and DVDs. Print images and text onto your favourite photo compilation CD or much-loved location DVD. You can even print multiple thumbnail images for easy reference to the photos stored on your CD or DVD.



### Front feeder

Enabling switch-back feeding from the front, the front feeder supports a wider range of media including large sized papers such as 14" x 17", as well as thick papers (up to 1.2mm) such as Fine Art Papers.



## FINE ART PAPERS



### Fine Art Paper "Photo Rag"™ FA-PR1

Photo Rag™ is a smooth, bright white 100% cotton rag based paper with a soft, velvet texture. Suitable for high quality digital photographic and fine art reproduction.



### Fine Art Paper Premium Matte FA-PM1

A premium heavy-weight paper with a smooth, non-glare matte surface. Suitable for many applications including professional quality photographs and computer generated artwork.



### Fine Art Museum Etching FA-ME1

Museum Etching Paper is a thick, 350gsm fine art paper with a subtle surface texture. This natural white paper is exceptional for black and white or colour production allowing for smooth, delicate tonal gradations.

# PIXMA PRO RANGE

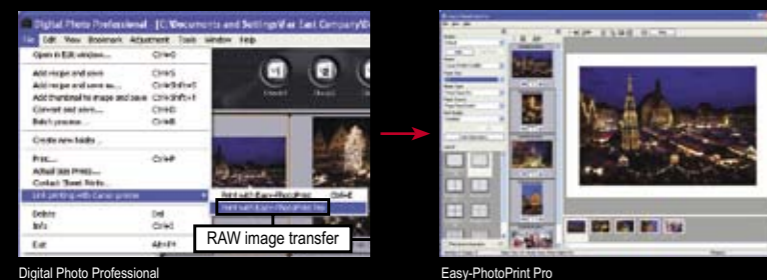
## EASE, CONTROL, WORKFLOW

### Simplify your workflow using Easy-PhotoPrint Pro

Easy-PhotoPrint Pro software comes with the PIXMA Pro range, and is designed for professionals. Just access a plug-in from Digital Photo Professional (Ver. 2.1 and later) or from Adobe® Photoshop® CS/CS2/CS3, and your image data is instantly opened in Easy-PhotoPrint Pro, allowing you to go on to make further print settings with seamless operation and no more need to save the file and reopen it, your printing jobs have never been so smooth and easy.

### Direct printing of RAW images

When printing RAW images, you no longer need to take time converting your data to TIFF- or JPEG-format, or saving your data to reopen it for printing with another application. With the PIXMA Pro range, you can directly print RAW images – your printing jobs have never been so easy and fuss-free.



### Monochrome printing with richly expressive gradations

With Easy-PhotoPrint Pro, just checking the “Grayscale Photo” gives you richly-expressive, monochrome photos with finely expressed light and shadow gradations. Also available are colour control of Cool Tone/Warm Tone, as well as additional adjustment functions for brightness, contrast and colour balance.

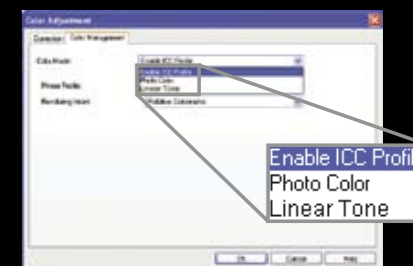


# PIXMA PRO RANGE

## COLOUR MANAGEMENT

### “Enable ICC profile” to faithfully reproduce colours from your EOS digital camera

When you have an ICC profile for your colour management, there's no need for any special operation. Once you apply your Picture Style settings to an image using Digital Photo Professional (Ver. 2.1 and later), they remain for use in Easy-PhotoPrint Pro. Likewise, all the image's colour gamut data (Adobe® RGB (1998)/sRGB) are automatically recognised, allowing you to make prints with colours faithfully reproduced to the original.

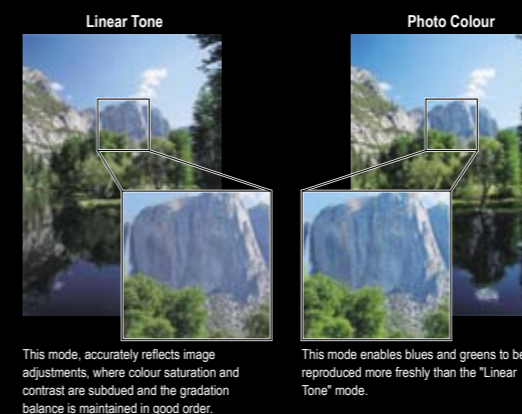


### “Linear Tone” for more accurate reproduction of your editing settings

“Linear Tone” is a new print mode that, for the cases when creative photographers choose to do their own image editing, places priority on the accuracy in reproducing user-defined image data's gradation. By using “Linear Tone” mode, you can get shadow details that normally tend to be lost while maintaining the total balance in the gradation. By linearly reproducing your editing preferences on your output, “Linear Tone” mode ensures an impressive level of print results.

### “Photo Colour” is the mode recommended for printing beautiful images with ease, without having to make any adjustments to JPEG-captured images

“Photo Colour” represents “Canon Digital Photo Colour”. Select this mode to print images by emphasising “favourable colours” – colours that tend to be preferred.



# PIXMA PRO RANGE

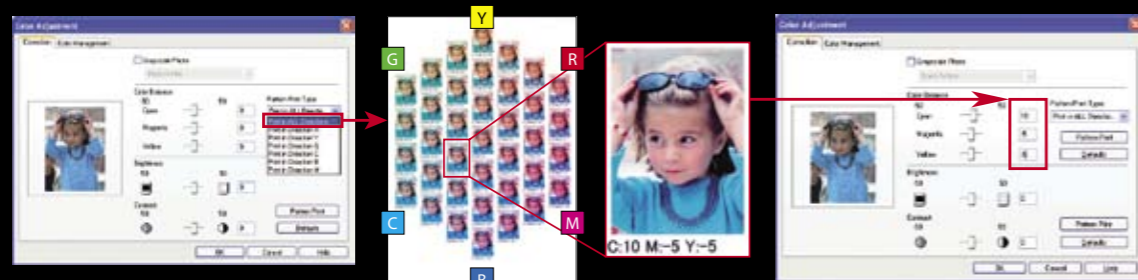
## COLOUR CORRECTION

**Customising the colour balance settings at your will, with your own eyes**

The PIXMA Pro range offers user-definable colour balance, brightness and contrast that can also be registered and re-applied later. It's a new function that helps reflect users' own colour preferences on the print results. You are sure to find it helpful when, for example, specifying dedicated settings for special types of media or making subtle levels of colour adjustments depending on the photographer's intentions.

### Pattern print

A function to automatically simulate the user-defined colour adjustments (colour balance etc.) into thumbnail patterns, so that creative photographers can print out and check the results on the actual paper before choosing the desired colour.



## One-time settings for multiple image printing

All you need is just one click to specify a variety of print layouts, such as borderless prints or contact prints. Also available is printing with shooting information. When printing large volumes, all settings for multiple images can be done at one time – paper size, media type, etc. – without having to repeat the settings for each single image. These features provide enhanced ease and speed in your printing jobs.



# PIXMA PRO RANGE

## CAMERA DIRECT

### Manual colour adjustment

With Canon's camera-printer connection, you can manually make adjustments to faithfully reflect your preferred settings in the Picture Style. Level, contrast, saturation, and colour balance are adjustable. By using these features, you can now have prints closer to your intention even in Camera Direct printing<sup>4</sup>.

Print Mode	Characteristics
Natural	Faithfully reproduces "Standard", "Portrait" and "Landscape" Picture Styles. Also enables Brightness adjustment.
Natural M	In addition to the above characteristics Natural M enables adjustment of Adjust levels, Contrast, Saturation, Colour tone and Colour balance.
B/W B/W	Outputs prints in black and white with rich tonal expression and no colour shift.
B/W Cool tone	Outputs prints in a bluish, cool monochrome tone.
B/W Warm tone	Outputs prints in a reddish, warm monochrome tone.

### Example: Colour balance adjustment

The colour balance can be shifted in the directions of Green (G), Amber (A), Magenta (M) and Blue (B).



# PIXMA PRO RANGE

## Useful layout functions

With 35-up **contact prints**, you can print an index of your images in 35mm size.



**PictBridge** now offers a "Print shooting information" function, through which the user can print up to eight types of shooting information, including the name of the camera model used, on the white space bordering photos. Information such as the dates and file numbers can also be added.



File number and date of photography

- Shooting information
- 1) Camera model name
  - 2) Lens name
  - 3) Shooting mode
  - 4) Shutter speed
  - 5) f-Number
  - 6) Exposure bias value
  - 7) ISO speed ratings
  - 8) White balance

## Image adjust

### Face brightener

Faces of subjects that have been darkened in shadows are automatically detected and brightened.



### Red-eye correction

Red-eye images can be corrected quickly and easily to provide natural-looking results.



## PIXMA Pro Range Specifications

Printer Functions	PIXMA Pro9500	PIXMA Pro9000																																																				
<b>Printing Speed<sup>1</sup></b>	Photo Paper Plus Semi-gloss (11" x 14" image on A3+ with border): approx. 237 seconds. 704 seconds in High	Colour graphics: approx. 15 ppm Photo Paper Pro (11" x 14" image on A3+ with border): approx. 83secs standard																																																				
<b>Printing Resolution<sup>2</sup></b>	4800 x 2400 dpi	4800 x 2400 dpi																																																				
<b>Borderless Printing<sup>**</sup></b>	A3+, A3, A4, Letter, 5" x 7", 6" x 4", 8" x 10", 10" x 12", 14" x 17"	A3+, A3, A4, Letter, 5" x 7", 6" x 4", 8" x 10", 10" x 12", 14" x 17"																																																				
<b>Ink Tank</b>	PGI-9 PM/PBK/MBK/PC/GY/M/Y/C/G/R - Pigment ink tanks	CLI-8Bk - CLI-8C/M/Y/PM/PC/R/G - Dye ink tanks																																																				
<b>Ink Yield<sup>*</sup></b>	11" x 14" image: PGI-9PM - approx. 37, PGI-9PBK - approx. 43, PGI-9MBK - approx. 219, PGI-9PC - approx. 44, PGI-9GY - approx. 37, PGI-9M - approx. 144, PGI-9Y - approx. 125, PGI-9C - approx. 79, PGI-9G - approx. 160, PGI-9R - approx. 104	11" x 14" image: CLI-8C - approx. 62, CLI-8M - approx. 53, CLI-8Y - approx. 40, CLI-8Bk - approx. 65, CLI-8PC - approx. 32, CLI-8PM - approx. 24, CLI-8G - approx. 525, CLI-8R - approx. 550																																																				
<b>Approx. Paper Handling (ASF / Front Feed)</b>	<table border="0"> <tr> <td>Plain Paper (13mm):</td> <td>150 / 1</td> </tr> <tr> <td>Super White Paper (SW-201):</td> <td>100 / 1</td> </tr> <tr> <td>Photo Paper Plus Glossy (PP-101):</td> <td>A3+: 1, A3/A4/5" x 7": 10, 6" x 4": 20 / A3+/A3/A4/5" x 7"/6" x 4": 1</td> </tr> <tr> <td>Photo Paper Plus Semi-gloss (SG-201):</td> <td>A3+: 1, A3/A4: 10, 6" x 4": 20 / A3+/A3/A4/6" x 4": 1</td> </tr> <tr> <td>Matte Photo Paper (MP-101):</td> <td>A3+: 1, A3/A4: 10, 6" x 4": 20 / A3+/A3/A4/6" x 4": 1</td> </tr> <tr> <td>Fine Art Paper "Photo Rag" (FA-PR1):</td> <td>A3+/A3+A4: 1 / 1</td> </tr> <tr> <td>Fine Art Paper "Premium Matte" (FA-PM1):</td> <td>N/A / A3+/A3/A4: 1</td> </tr> <tr> <td>Fine Art Paper "Museum Etching" (FA-ME1):</td> <td>N/A / A3+/A3/A4: 1</td> </tr> <tr> <td>Other Fine Art Paper</td> <td>A3+/A3+A4: 1 / A3+/A3+A4: 1</td> </tr> <tr> <td>Photo Stickers (PS-101):</td> <td>1 / 1</td> </tr> </table>	Plain Paper (13mm):	150 / 1	Super White Paper (SW-201):	100 / 1	Photo Paper Plus Glossy (PP-101):	A3+: 1, A3/A4/5" x 7": 10, 6" x 4": 20 / A3+/A3/A4/5" x 7"/6" x 4": 1	Photo Paper Plus Semi-gloss (SG-201):	A3+: 1, A3/A4: 10, 6" x 4": 20 / A3+/A3/A4/6" x 4": 1	Matte Photo Paper (MP-101):	A3+: 1, A3/A4: 10, 6" x 4": 20 / A3+/A3/A4/6" x 4": 1	Fine Art Paper "Photo Rag" (FA-PR1):	A3+/A3+A4: 1 / 1	Fine Art Paper "Premium Matte" (FA-PM1):	N/A / A3+/A3/A4: 1	Fine Art Paper "Museum Etching" (FA-ME1):	N/A / A3+/A3/A4: 1	Other Fine Art Paper	A3+/A3+A4: 1 / A3+/A3+A4: 1	Photo Stickers (PS-101):	1 / 1	<table border="0"> <tr> <td>Plain Paper (13mm):</td> <td>150 / 1</td> </tr> <tr> <td>Super White Paper (SW-201):</td> <td>100 / 1</td> </tr> <tr> <td>High Resolution Paper (HR-101N):</td> <td>A3+: 20, A3: 50, A4: 80 / A3+/A3/A4: 1</td> </tr> <tr> <td>Photo Paper Pro (PR-101):</td> <td>A3+: 1, A3/A4: 10, 6" x 4": 20 / A3+/A3/A4/6" x 4": 1</td> </tr> <tr> <td>Photo Paper Plus Glossy (PP-101):</td> <td>A3+: 1, A3/A4/5" x 7": 10, 6" x 4": 20 / A3+/A3/A4/5" x 7"/6" x 4": 1</td> </tr> <tr> <td>Photo Paper Plus Semi-gloss (SG-201):</td> <td>A3+: 1, A3/A4: 10, 6" x 4": 20 / A3+/A3/A4/6" x 4": 1</td> </tr> <tr> <td>Glossy Photo Paper (GP-401):</td> <td>A3+: 1, A3/A4: 10, 6" x 4": 20 / A3+/A3/A4/6" x 4": 1</td> </tr> <tr> <td>Matte Photo Paper (MP-101):</td> <td>A3+: 1, A3/A4: 10, 6" x 4": 20 / A3+/A3/A4/6" x 4": 1</td> </tr> <tr> <td>Fine Art Paper "Photo Rag" (FA-PR1):</td> <td>A3+/A3+A4: 1 / N/A</td> </tr> <tr> <td>Fine Art Paper "Premium Matte" (FA-PM1):</td> <td>N/A / A3+/A3/A4: 1</td> </tr> <tr> <td>Fine Art Paper "Museum Etching" (FA-ME1):</td> <td>N/A / A3+/A3/A4: 1</td> </tr> <tr> <td>Other Fine Art Paper</td> <td>A3+/A3+A4: 1 / A3+/A3+A4: 1</td> </tr> <tr> <td>Photo Stickers (PS-101):</td> <td>1 / 1</td> </tr> <tr> <td>Transparency (CF-102):</td> <td>30 / 1</td> </tr> <tr> <td>T-Shirt Transfers (TR-301):</td> <td>1 / 1</td> </tr> <tr> <td>Envelopes (DL, Com. #10):</td> <td>10 / N/A</td> </tr> </table>	Plain Paper (13mm):	150 / 1	Super White Paper (SW-201):	100 / 1	High Resolution Paper (HR-101N):	A3+: 20, A3: 50, A4: 80 / A3+/A3/A4: 1	Photo Paper Pro (PR-101):	A3+: 1, A3/A4: 10, 6" x 4": 20 / A3+/A3/A4/6" x 4": 1	Photo Paper Plus Glossy (PP-101):	A3+: 1, A3/A4/5" x 7": 10, 6" x 4": 20 / A3+/A3/A4/5" x 7"/6" x 4": 1	Photo Paper Plus Semi-gloss (SG-201):	A3+: 1, A3/A4: 10, 6" x 4": 20 / A3+/A3/A4/6" x 4": 1	Glossy Photo Paper (GP-401):	A3+: 1, A3/A4: 10, 6" x 4": 20 / A3+/A3/A4/6" x 4": 1	Matte Photo Paper (MP-101):	A3+: 1, A3/A4: 10, 6" x 4": 20 / A3+/A3/A4/6" x 4": 1	Fine Art Paper "Photo Rag" (FA-PR1):	A3+/A3+A4: 1 / N/A	Fine Art Paper "Premium Matte" (FA-PM1):	N/A / A3+/A3/A4: 1	Fine Art Paper "Museum Etching" (FA-ME1):	N/A / A3+/A3/A4: 1	Other Fine Art Paper	A3+/A3+A4: 1 / A3+/A3+A4: 1	Photo Stickers (PS-101):	1 / 1	Transparency (CF-102):	30 / 1	T-Shirt Transfers (TR-301):	1 / 1	Envelopes (DL, Com. #10):	10 / N/A
Plain Paper (13mm):	150 / 1																																																					
Super White Paper (SW-201):	100 / 1																																																					
Photo Paper Plus Glossy (PP-101):	A3+: 1, A3/A4/5" x 7": 10, 6" x 4": 20 / A3+/A3/A4/5" x 7"/6" x 4": 1																																																					
Photo Paper Plus Semi-gloss (SG-201):	A3+: 1, A3/A4: 10, 6" x 4": 20 / A3+/A3/A4/6" x 4": 1																																																					
Matte Photo Paper (MP-101):	A3+: 1, A3/A4: 10, 6" x 4": 20 / A3+/A3/A4/6" x 4": 1																																																					
Fine Art Paper "Photo Rag" (FA-PR1):	A3+/A3+A4: 1 / 1																																																					
Fine Art Paper "Premium Matte" (FA-PM1):	N/A / A3+/A3/A4: 1																																																					
Fine Art Paper "Museum Etching" (FA-ME1):	N/A / A3+/A3/A4: 1																																																					
Other Fine Art Paper	A3+/A3+A4: 1 / A3+/A3+A4: 1																																																					
Photo Stickers (PS-101):	1 / 1																																																					
Plain Paper (13mm):	150 / 1																																																					
Super White Paper (SW-201):	100 / 1																																																					
High Resolution Paper (HR-101N):	A3+: 20, A3: 50, A4: 80 / A3+/A3/A4: 1																																																					
Photo Paper Pro (PR-101):	A3+: 1, A3/A4: 10, 6" x 4": 20 / A3+/A3/A4/6" x 4": 1																																																					
Photo Paper Plus Glossy (PP-101):	A3+: 1, A3/A4/5" x 7": 10, 6" x 4": 20 / A3+/A3/A4/5" x 7"/6" x 4": 1																																																					
Photo Paper Plus Semi-gloss (SG-201):	A3+: 1, A3/A4: 10, 6" x 4": 20 / A3+/A3/A4/6" x 4": 1																																																					
Glossy Photo Paper (GP-401):	A3+: 1, A3/A4: 10, 6" x 4": 20 / A3+/A3/A4/6" x 4": 1																																																					
Matte Photo Paper (MP-101):	A3+: 1, A3/A4: 10, 6" x 4": 20 / A3+/A3/A4/6" x 4": 1																																																					
Fine Art Paper "Photo Rag" (FA-PR1):	A3+/A3+A4: 1 / N/A																																																					
Fine Art Paper "Premium Matte" (FA-PM1):	N/A / A3+/A3/A4: 1																																																					
Fine Art Paper "Museum Etching" (FA-ME1):	N/A / A3+/A3/A4: 1																																																					
Other Fine Art Paper	A3+/A3+A4: 1 / A3+/A3+A4: 1																																																					
Photo Stickers (PS-101):	1 / 1																																																					
Transparency (CF-102):	30 / 1																																																					
T-Shirt Transfers (TR-301):	1 / 1																																																					
Envelopes (DL, Com. #10):	10 / N/A																																																					
<b>Supported Paper Sizes</b>	LDR, LDR+, A3+, A3, A5, B5, A4, B4, Letter, Legal, Photo cards (6" x 4", 4" x 8", 5" x 7", 8" x 10")	A3+, A3, A4, A5, B5, B4, LDR+, LDR, Letter, Legal, Envelopes (DL, Com. #10), 5" x 7", 6" x 4"																																																				
<b>Supported Paper Weights</b>	ASF: 64-105g/m <sup>2</sup> (supported Photo Paper Plus Glossy 270g/m <sup>2</sup> ) Front Feed: up to 1.2mm	ASF: 64-105g/m <sup>2</sup> (supported Photo Paper Plus Glossy 270g/m <sup>2</sup> ) Front Feed: up to 1.2mm																																																				
<b>Recommended Printable Area</b>	Top Margin: 35mm / Bottom Margin: 30.5mm Top Margin: 35mm / Bottom Margin: 35mm (when printing on Fine Art Paper (PhotoRag, Premium Matte, Museum Etching) and Other Fine Art Paper)	Top Margin: 3mm / Bottom Margin: 5mm (Borderless photo printing) Top and Bottom margin: 0mm																																																				
<b>Bundled Software</b>	<b>Windows:</b> Easy-PhotoPrint, Easy-PhotoPrint Pro, Easy-Layout Print, CD-LabelPrint <b>Macintosh:</b> Easy-PhotoPrint, Easy-PhotoPrint Pro, CD-LabelPrint	<b>Windows:</b> Easy-PhotoPrint, Easy-PhotoPrint Pro, Easy-WebPrint <sup>†</sup> , PhotoRecord, CD-LabelPrint <b>Macintosh:</b> Easy-PhotoPrint, Easy-PhotoPrint Pro, CD-LabelPrint																																																				
<b>Interface</b>	<b>PC:</b> USB 2.0 Hi-Speed <sup>*</sup> <b>Camera Direct:</b> Direct Print Port (PictBridge) <sup>5</sup>	<b>PC:</b> USB 2.0 Hi-Speed <sup>*</sup> <b>Camera Direct:</b> Direct Print Port (PictBridge) <sup>5</sup>																																																				
<b>Operating System</b>	Windows Vista/XP/2000 Mac OS X v 10.2.8 or later	Windows Vista/XP/2000/Me/98 Mac OS X v 10.2.8 or later																																																				
<b>General Features</b>																																																						
<b>Weight</b>	Approx. 15.4 kg	Approx. 14 kg																																																				
<b>Power Source</b>	AC 100-240V	AC 100-240V																																																				
<b>Power Consumption</b>	Max: 20W, Standby: 1.8W	Max: 20W, Standby: 1.8W																																																				
<b>Acoustic Noise Level</b>	36dB(A) in best quality mode	39dB(A) in best quality mode																																																				
<b>Operating Environment</b>	5-35°C, 10-90% Humidity	5-35°C, 10-90% Humidity																																																				
<b>Dimensions (W x D x H)</b>	660 x 354 x 191 mm (minimum dimensions with paper trays and other extensions closed)	660 x 354 x 191 mm (minimum dimensions with paper trays and other extensions closed)																																																				
<b>Included In The Box</b>	PIXMA Pro9500 Inkjet Printer, CD Tray, Setup Software & User's Guide CD-ROM, 10 individual ink tanks (PGI-9PM, PGI-9PBK, PGI-9MBK, PGI-9PC, PGI-9Y, PGI-M, PGI-Y, PGI-C, PGI-G, PGI-R), Print-head, 12 months warranty card, Power cord	PIXMA Pro9000 Inkjet Printer, CD Tray, Setup Software & User's Guide CD-ROM, 8 individual ink tanks (CLI-8C, CLI-8M, CLI-8Y, CLI-8Bk, CLI-8PC, CLI-8PM, CLI-8R, CLI-8G), Print-head, 12 months warranty card, Power cord																																																				

<sup>\*</sup>Ink yield calculation is based on printing Photo (11" x 14" image) (colour): When printing ISO/JIS-SCID N2 pattern at 11" x 14" size continuously on A3+ Photo Paper Plus Semi-gloss, with the default settings of Photo Paper Plus Semi-gloss using Windows XP printer driver and Photoshop CS2. Ink yield may vary depending on photos printed, applications software used, print mode and type of paper used. This should be used as a guide only and does not take into account ink that might be used for head cleaning or head refreshing to maintain printer performance. Please visit our website for further details.

<sup>\*\*</sup> Supported paper types for borderless printing: Photo Paper Plus Glossy, Photo Paper Plus Semi-gloss, Matte Photo Paper.

<sup>†</sup> Wilhelm Imaging Research Display Permanence Ratings.

1. Based on Canon standard pattern. Print speed may vary depending on system configuration, interface, software, document complexity, print mode, page coverage, type of paper used and does not take into account data processing time on host computer. The default mode setting is "High" mode for Pro9500.
2. Ink droplets can be placed with a pitch of 1/4800 inch at minimum.
3. Easy-WebPrint requires Microsoft Internet Explorer version 5.5, version 6.0 recommended.
4. USB 2.0 Hi-speed performance requires Windows XP with Service Pack 1 or Windows 2000 with Service Pack 4 with pre-installed USB 2.0 Hi-Speed port.
5. PictBridge camera direct printing requires PictBridge compatible digital cameras in order to function. Check with your digital camera manufacturer or users guide to determine PictBridge compatibility.
6. Up to 100 Years' Life in a Photo Album when printed with ChromaLife100 ink on selected Canon photo papers. Kept in a photo album, shut out light and air (gas), temperature 23 degrees and 50% humidity. Predicted value from the accelerated test. Result may vary based on individual environmental factors. For more information, please visit [canon.com.au/ChromaLife100](http://canon.com.au/ChromaLife100)
7. Photo print speed is based on the default mode driver setting using Canon Photo Paper Pro paper. Print speed dependent on system configuration, image/document complexity, type of paper used, software, print mode and does not take into account data processing time on host computer.