

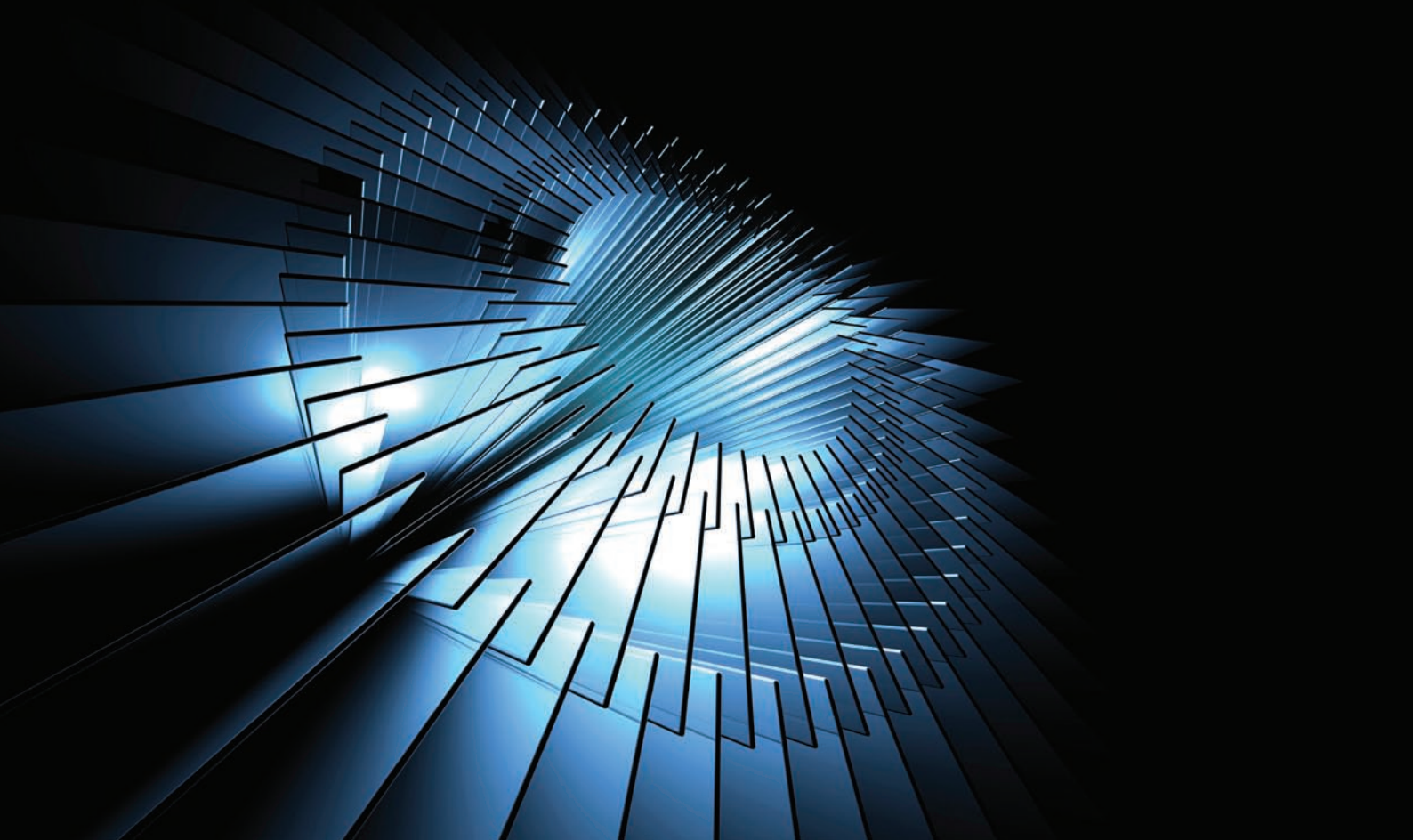
**Canon**  
advanced simplicity®

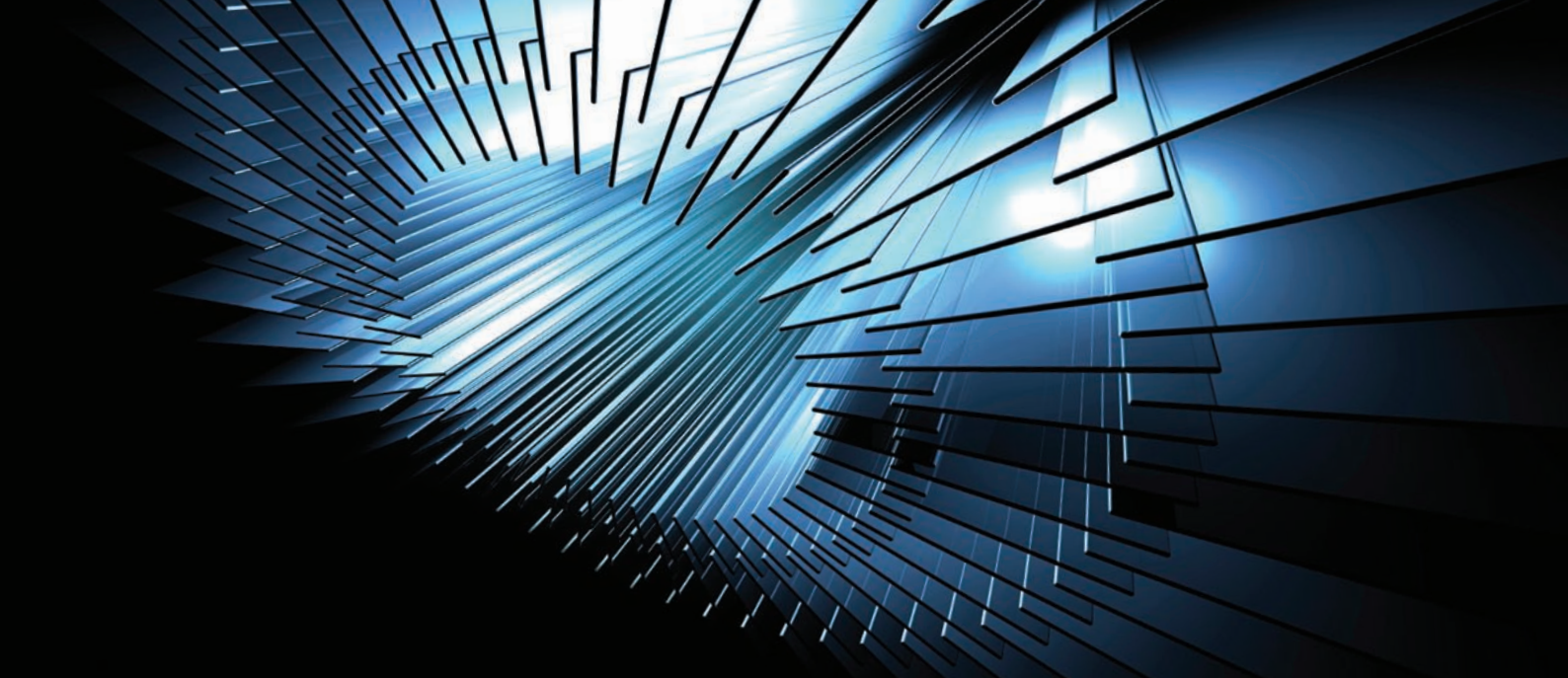


**imageFORMULA**  
**DR-X10C**

 **imageFORMULA**

**State-of-the-art performance  
and flexibility for reliable,  
high volume scanning**





**The Canon imageFORMULA DR-X10C colour production scanner uses state-of-the-art technology for high-speed, high-quality image scanning, delivering reliable document handling capabilities and superior durability.**

### **Fast Speed for Production Scanning**

The DR-X10C scanner is capable of maintaining impressive scanning speeds of up to 128 pages per minute and 256 images per minute,\* in colour, grayscale, or black-and-white, due in part to a dedicated onboard Image Processing Chip. This hardware chip can handle multiple image processing functions simultaneously, virtually independent of connected PC performance.



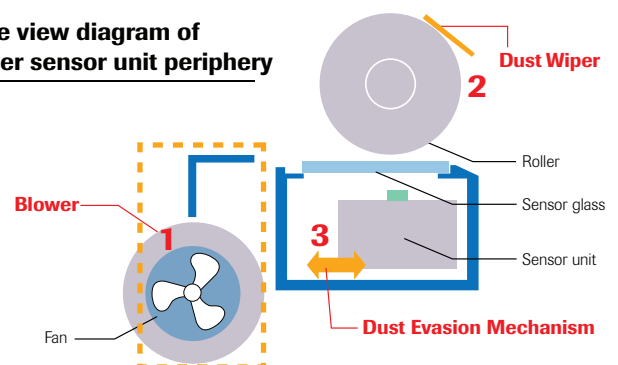
To support these speeds, fast connectivity is offered with Hi-Speed USB 2.0 and SCSI III ports. The DR-X10C scanner also allows for optional onboard Kofax implementation.\*\* This hardware solution will deliver the full advantages of VRS image enhancement capabilities, as well as improved scanning speed and productivity.

### **Outstanding Canon Image Quality**

The DR-X10C scanner introduces the industry's first dust-free scanning system. A revolutionary three-step approach helps prevent dust particles from accumulating and adhering to the sensor glass, resulting in clearer images and minimized manual cleaning. Uniform, consistent images are captured with utmost precision and clarity—at up to 600 dpi—due to Canon's advanced image processing features, which include Automatic Shading Mechanism and Three-Dimensional Colour Correction.

### **Three-Step Dust Prevention System**

**Side view diagram of lower sensor unit periphery**



## Reliable, Flexible Document Handling

The DR-X10C scanner delivers smooth, jam-free feeding of a wide variety of document sizes, from business cards up to A3 (297mm x 420mm), or even A1 (594mm x 841mm) in Folio Mode.\*\*

Batch scanning preparation time is reduced with the industry's first dedicated page size and skew detection sensor, a new five-level user-adjustable Active Separation Torque controller, and Staple Detection feature.

For further flexibility, the DR-X10C scanner is equipped with three user-adjustable Ultrasonic Double-Feed Detection sensors to correctly batch scan documents with attached photographs or notes. Plus, a Double-Feed Retry mechanism—which reverses documents and attempts to feed them again—and Canon's Rapid Recovery System ensures the DR-X10C scanner's superior, reliable, and flexible document handling.

## Superior Durability

The DR-X10C scanner features a robust design, including a solid body and durable roller system to handle the demands of high-volume production scanning. The scanner is rated at a daily duty cycle of 60,000 scans—superior performance for this price range.

## Environment in Mind

The DR-X10C scanner has been designed with the environment in mind, consolidating distributed scanning points into a single, central point, thus reducing overall energy consumption. In fact, the DR-X10C scanner boasts one of the lowest energy consumption levels in the Volume Production scanner market. When connected via USB, it can

be synchronized to automatically turn on and off, according to the status of the connected PC, and also includes Standby Mode to conserve power. It also meets the Energy Star® Program guidelines for energy efficiency, and complies with the RoHS and WEEE directives for reduction of hazardous substances and waste products.

## Easy To Use and Maintain

Select from programmable pre-registered Scan-To-Job buttons, check displayed messages, and select scanner settings, using the intuitive control panel on the DR-X10C scanner. The feeding tray even opens automatically when the scanner is powered on. The DR-X10C scanner also features an ergonomic, compact, and lightweight design that adds to the operator's handling comfort, and includes user-replaceable feed rollers for easy maintenance.

## A Smart Investment

The DR-X10C scanner offers enhanced sensor technology and a reliable feeding system to ensure that high volumes of mixed paper sizes or other challenging scan jobs are handled with minimal operator intervention at maximum scanning speed. Plus, the robust, compact design, energy saving performance, and advanced functionality tackle the high demands of any production-level environment.

\* Examples based on typical settings, rated in pages/images per minute with A4-sized documents at 200 dpi, landscape feeding direction. Actual processing speeds may vary based on PC performance and application software.

\*\* Kofax CGA Board available approx August 2008.

\*\*\* Up to 594mm x 841mm using Folio and Long Document Mode.

## Bundled Software

- ISIS/Twain Driver
- CapturePerfect® 3.0

**Canon**  
advanced simplicity®



# Specifications

## imageFORMULA DR-X10C

**Type:**

Production Sheetfed Scanner

**Document Feeding:**

Automatic or Manual

**Document Size:**

Width: 50.8mm - 305mm

Length: 70mm - 432mm

**Document Weight:**

Automatic Feeding: 52-128 g/m<sup>2</sup> Bond

Manual Feeding: 42-255g/m<sup>2</sup> Bond

**Feeder Capacity:** 500 Sheets**Grayscale:** 8-bit**Colour:** 24-bit**Scanning Element:**

3-Line CMOS Contact Image Sensor

**Light Source:** RGB LED**Scanning Modes:**

Simplex, Duplex, Colour, Grayscale, Black and White, Error Diffusion, Advanced Text Enhancement (Two Types)

**Dropout Colour:**

RGB and Custom

**Optical Resolution:**

600 dpi

**Output Resolution:**

100/150/200/240/300/400/600 dpi

**Scanning Speeds\***

	Simplex	Duplex
Black and White:	128 ppm	256 ipm
Grayscale:	128 ppm	256 ipm
Colour:	128 ppm	256 ipm

**Interface:**

SCSI-III and Hi-Speed USB 2.0

**Scanner Drivers:**

ISIS/TWAIN for Windows® 2000/XP/Windows Vista®

**Dimensions (H x W x D):**

375 x 528 x 533 mm

**Weight:**

39 kg.

**Power Consumption:**

125W or less (Energy Saving Mode: 4.5W)

**Daily Duty Cycle:** 60,000 Scans**Options**

- Exchange Roller Kit
- Pre-Imprinter
- Post-Imprinter
- Patch Code Decoder
- Barcode Module III
- Kofax CGA Board

**Other Features**

- 3-Sensor Ultrasonic Double-Feed Detection
- Staple Detection
- Selectable Background Colour
- Dust Countermeasures
- Auto USB Power Switching
- Auto Colour Detection
- Automatic Page Size Detection
- Deskew
- Batch Separation
- Long Document Mode (up to 1,000mm)
- Folio Mode
- Custom Colour Dropout
- MultiStream™
- Re-try Feeding
- Three-Position Paper Feeding Tray

\* Up to A1 (594mm x 841mm) using Folio and Long Document Mode.

\*\* Examples based on typical settings, rated in pages/images per minute with A4-sized documents at 200 dpi, landscape feeding direction. Actual processing speeds may vary based on PC performance and application software.

\*\*\* Kofax CGA Board available during third quarter, 2008.

**Canon**  
advanced simplicity®

[canon.com.au](http://canon.com.au)

Sydney	Melbourne	Brisbane	Adelaide	Perth	Canberra	Auckland
1 Thomas Holt Drive North Ryde NSW 2113 Ph (02) 9805 2600 Fax (02) 9887 3137	33 Lakeside Drive Burwood East VIC 3151 Ph (03) 9881 0000 Fax (03) 9881 0316	Southgate Corporate Park 18 Southgate Avenue Cannon Hill QLD 4170 Ph (07) 3909 5000 Fax: (07) 3909 5068	1 South Road Thebarton SA 5031 Ph (08) 8201 9100 Fax (08) 8352 5365	68 Hasler Road Osborne Park WA 6017 Ph (08) 9347 2222 Fax (08) 9242 4120	98 Barrier Street Fyshwick ACT 2609 Ph (02) 6206 5999 Fax (02) 6206 5933	Akoranga Business Park Akoranga Drive Northcote Ph (09) 489 0300 Fax (09) 489 0399