



*BIG GROWTH  
OPPORTUNITIES  
IN A SMALL  
FOOTPRINT*

**Canon imagePRESS  
C850/C750**

[canon.com.au/business](http://canon.com.au/business)

**Canon**

*achieve more.*

imagePRESS C850/C750

# STUNNING IMAGE QUALITY EXTRAORDINARY *FLEXIBILITY*



imagePRESS C850 model shown with optional accessories.

## PRODUCT AT-A-GLANCE

### PRODUCTIVITY

- Production speeds of up to 85 ipm (colour and B/W)
- Maintains rated speed on uncoated stocks up to 220 gsm
- 7,650-sheet feeding capacity with up to six different sources
- Wide array of in-line feeding and finishing accessories

### PRINT QUALITY

- Vibrant and consistent image quality on a wide variety of media
- 2400 x 2400 dpi print resolution
- Precise, front-to-back registration
- Gloss optimisation
- Variety of calibration options to help maximise colour consistency

### CHOICE OF WORKFLOWS

- PRISMAsync Color Print Server
- imagePRESS Server H300 v1.0
- imagePRESS Server G100 v1.2
- imagePRESS Printer Kit D1E

## THE CANON imagePRESS C850/C750 SERIES — A SUPERB FIT FOR EVERY PRINT ENVIRONMENT

### IN-PLANT/CRD

The imagePRESS C850/C750 digital colour production presses deliver all the productivity, ease of use, and versatility your operation requires, letting you do more with fewer operators. Optional PRISMA software solutions and PRISMAsync provide simple, intuitive operation.

Jobs are rapidly processed and can be finished in-line with minimal operator intervention. To enhance productivity, customers can submit work to the CRD via a wide variety of available software solutions, including Canon's enterprise-wide print management solution, uniFLOW.

### QUICK PRINT

Finally there's a solution that meets the needs of the quick print market, incorporating high quality, reliability, and versatility to deliver powerful opportunities in a small footprint. Intuitive and easy to operate user interfaces help streamline prepress and production tasks.

Customers can expand their capabilities to handle a range of media, including long sheets up to 762 mm and envelopes in different sizes and weights. In-line finishing options facilitate the output of quality ring-bound presentations, three-fold flyers such as sell sheets, and multipage, full-bleed brochures.

### COMMERCIAL PRINT

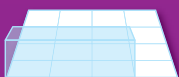
With quality that rivals offset, these digital presses offer many advantages:

- Gloss optimisation
- Consistent colour, thanks to the stable engine platform with CV toner
- Multi D.A.T., real time colour correction and calibration features, including G7® calibration on the PRISMAsync controller
- Precise front-to-back registration

The imagePRESS C850/C750 is ideal for short runs and variable data printing. It's also a cost-effective backup for your other devices.

These versatile presses support outstanding efficiency, with the ability to integrate seamlessly with existing work flow solutions. And with multiple in-line folding and binding options and the ability to output envelopes, you'll be able to realise new business opportunities.

## PRODUCT FEATURES



### A SMALL FOOTPRINT

Enjoy quality results with new imaging technologies, outstanding versatility and powerful performance—all in a small footprint. An ideal fit for a business ready for growth.



### MANY MEDIA CHOICES

Pleasure customers with the ability to print on attention grabbing stocks and envelopes in a range of sizes. Expand new applications with duplex long sheet printing of up to 762 mm.



### VERSATILE IN-LINE FINISHING

Produce a broad range of print products, including three-fold brochures, saddle-stitched and square-folded brochures, postcards, business cards, presentation and training materials, flyers and perfect bound books.



### GLOSS OPTIMISATION

As with offset printing, images closely match the gloss levels of the paper stock.

# HIGH-IMPACT COLOUR

## ADVANCED TECHNOLOGIES

### **R-VCSEL**

Images have remarkable clarity and definition with 2400 x 2400 dpi print resolution. The 32-beam red VCSEL laser produces clear, crisp output at high speed.

### **CV TONER**

Canon CV toner offers smooth particles and a low melting point to produce amazingly vibrant images on a wide variety of media.

### **ADVANCED IMAGE TRANSFER BELT (ITB)**

ITB increases the toner transfer efficiency to help achieve high quality on even textured or embossed stocks for custom and premium applications.



### **CV TONER AND ADVANCED ITB**

Enables quality printing on smooth and textured stocks.

## OUTSTANDING STABILITY

### **CALIBRATION TOOLS**

The imagePRESS C850/C750 colour digital presses offer automatic, real time calibration to reliably deliver high-quality, predictable output with minimal operator intervention.

### **VF DEVELOPER UNIT**

The developer unit maintains a cool temperature, efficiently using developer to help ensure stable image quality over time.

### **COMPACT REGISTRATION MODULE (CRM)**

The CRM combines digital sensors together with registration rollers so sheets are correctly positioned during print runs for high quality results every time.

### **HUMIDITY SENSOR/AIRFLOW UNIT**

The precisely controlled internal environment and regular airflow help maintain consistent, high quality images across every print run.



# HIGH-IMPACT COLOUR

## APPLICATION VERSATILITY



### MEDIA SUPPORT

These versatile presses support a wide variety of media in many sizes, including envelopes, textured sheets and thin-coated paper weighing as little as 52 gsm.



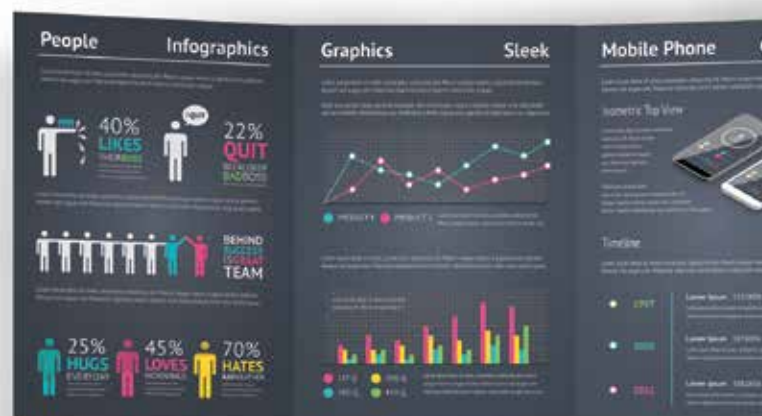
### LONG SHEET PRINTING

Expand your application offerings with the capability to print and auto duplex on long sheets up to 762 mm.



### IN-LINE FINISHING

Achieve “white paper in, finished product out” workflows with Canon’s extensive in-line finishing options. It maintains high quality, even on half-folded spines with the in-line creasing feature of the optional Multi Function Professional Puncher.\*



## MAXIMISED UPTIME



### LARGE MEDIA CAPACITY

A 7650 sheet input capacity\*\* allows for unattended production runs. And with up to six different sources, operators can load many different media types for mixed-media jobs.



### FAST PRODUCTION PRINT SPEEDS

Reach impressive production speeds of up to 85 A4 impressions per minute on a wide range of media. Without sacrificing quality, these presses can run at maximum speed on uncoated stock of up to 220 gsm and can automatically duplex jobs on up to 300 gsm media.



### ADVANCED TWIN-BELT FUSING TECHNOLOGY

Canon’s innovative induction heating and cooling technologies use two belts to allow fusing at a lower temperature, minimising heat fluctuations while printing on different media. This helps keep the press productive on regular and mixed-media jobs while still controlling gloss and image quality.



### RAPID REPLACEMENT

Keep the press running and maintain a steady workflow with the ability to replace paper and toner during a print run.

\* Not available at initial launch.

\*\* With optional Multi-Drawer Paper Deck.

# INNOVATION *END TO END*



The imagePRESS C850/C750 color production digital presses give you versatility, more automation, and better performance — all in a lot less space.

## KEY FEATURES

### FINISHING OPTIONS

#### 1 STAPLE<sup>\*</sup> AND SADDLE FINISHER

Corner staple up to 100 sheets or saddle-stitch<sup>\*</sup> up to 100 page booklets in paper sizes up to 330 X 488 mm. An external side jogger keeps paper in neat stacks and an optional 2 or 3 hole puncher is also available.

#### 2 BOOKLET TRIMMING

High productivity with large-capacity trim waste bin and rapid waste removal allow for a continuous run. These modules work with the Saddle Finisher to produce professional, full-bleed booklets in-line.

#### 3 PAPER FOLDING UNIT

Offer your customers promotional pamphlets, brochures, and more with the ability to produce Z-fold, C-fold, accordion fold, and double-parallel fold documents.

#### 4 HIGH CAPACITY STACKER

Realise maximum productivity with unload-while-run capability, giving uninterrupted printing and virtually unlimited stacking. The integrated DFD interface lets configurations include various third-party finishing devices.

#### 5 PROFESSIONAL DIE PUNCH AND CREASE UNIT<sup>‡</sup>

The Multi Function Professional Puncher<sup>‡</sup> handles a broad range of media sizes and weights, and it includes a creasing function that helps reduce paper or toner cracking on the spine.

#### 6 PERFECT BINDER

Using hot glue, this module binds covers to book blocks of up to 400 pages at 80 gsm and can trim on all three sides for full-bleed books or manuals.

#### 7 DOCUMENT INSERTION UNIT

This module enables insertion of slip sheets or preprinted inserts and covers.

<sup>\*</sup> Available only on Saddle Finisher.

<sup>‡</sup> Not shown.

<sup>‡</sup> Not available at launch.

All paper capacity numbers are based on 80 gsm.



## IMAGING

### 8 CV TONER

Canon's CV toner helps produce consistent, vivid, and sharp images on a wide range of media with a realistic, offset-like finish.

### 9 R-VCSEL LASER TECHNOLOGY

Latest technology provides clear, crisp 2400 x 2400 dpi output at high speeds.

### 10 ADVANCED TWIN-BELT FUSING

This technology optimises temperature control for outstanding productivity on media at weights as low as 52 gsm and as high as 300 gsm.

### 11 E-DRUM

The durable, reliable E-Drum is designed for excellent image transfer.

## USABILITY

### 12 PRISMAsync USER INTERFACE\*

The PRISMAsync interface expands possibilities with an intelligent server and media-driven workflow. It offers up to eight hours of advance production planning and scheduling, plus uniform workflow with other PRISMAsync-driven Canon digital presses, such as the varioPRINT DP Line, varioPrint 6000+ Series, and imagePRESS C10000VP Series.

### 13 OPERATOR ATTENTION LIGHT\*

You'll always know if your job is progressing smoothly because this helpful light displays the status of the press at a glance, alerting staff when it's time to intervene and keep production running.

### CANON PRESS CONSOLES\*\*

Easy access to operator settings, such as the media library, press stability controls, and output appearance settings.

## PAPER FEEDING OPTIONS

### 14 MULTI-DRAWER PAPER DECK

Three paper drawers offer up to 6000 sheet capacity and maximum size of 330 X 488 mm. All drawers accommodate all supported media weights and types, excluding envelopes.

### POD DECK LITE<sup>▲</sup>

This deck's 3500 sheet capacity supports paper sizes up to 330 x 488 mm and a wide range of envelopes.

### LONG SHEET TRAY<sup>▲</sup>

Along with the Stack Bypass Tray, this tray can feed long sheets up to 762mm.

### ADVANCED FEEDING TECHNOLOGIES

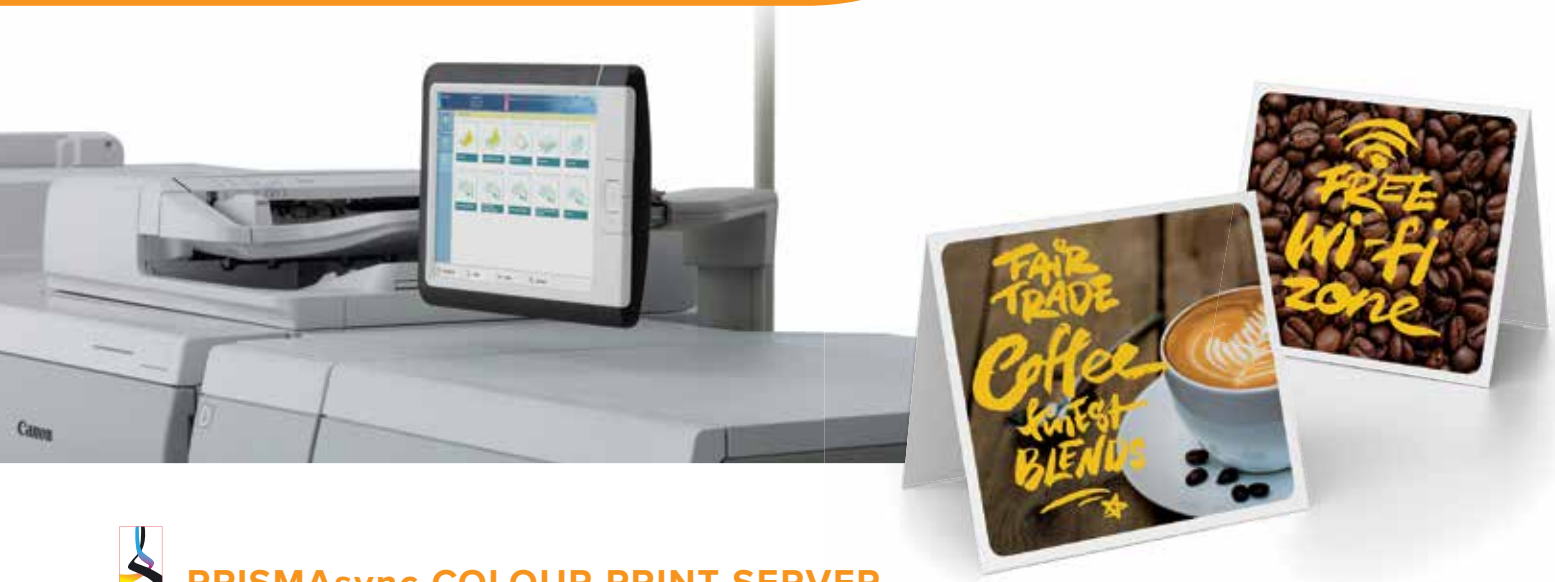
The Multi-Drawer Paper Deck and POD Deck Lite come standard with Air Separation and Air Assist features to help provide excellent paper feeding, especially of coated stocks.

\* Available only with PRISMAsync Color Print Server.

\*\* Available only with the imagePRESS Server H300 v1.0/G100 v1.2 and imagePRESS Printer Kit.

<sup>▲</sup> Not shown.

# STREAMLINED WORKFLOW



## PRISMAsync COLOUR PRINT SERVER

Flexible, cutting-edge controller that's impressively easy to use.

### A SINGLE POINT OF CONTROL

Canon's PRISMAsync Colour Print Server consolidates control of your entire production system into a single point. Whether preparing simple jobs such as scan-to-file or complex jobs such as page programming, you can easily perform a range of tasks from one user interface.

### INTUITIVE OPERATION

Prepress and production tasks are intuitively clear with a highly visual user interface design. Templates, automated workflows, and hot folders allow for the loading of repetitive job settings.

### CONFIGURABLE WORKFLOW SUPPORT

Whatever your workflow, the PRISMAsync Print Server can be set up to meet your precise needs using its configurable user interface. The embedded CIP4-compliant JDF/JMF workflow connector allows integration into JDF/JMF enabled workflows. And seamless integration with the PRISMA software suite offers access to easy-to-use, professional, make-ready and document management solutions.

### TOTAL PRODUCTION CONTROL

Stay in control of your schedule with plan-ahead production. The Job Scheduler lets you monitor multiple jobs, receive custom notifications, and change priorities as needed. Smart, state-of-the-art features, such as Page Programming and DocBox, let operators store and manipulate jobs directly from the PRISMAsync controller interface.

### PRISMASYNC REMOTE MANAGER

Operators and administrators can easily manage queues, submit print jobs, and reroute jobs among multiple PRISMAsync-driven engines via the standard PRISMAsync Remote Manager software. The unique, web-based Multi-Press Scheduler allows remote monitoring from virtually any workstation or mobile device on your network.



PRISMAsync Print Server



### CERTIFIED BY ADOBE FOR THEIR MERCURY RIP ARCHITECTURE

Enables digital printers to process their jobs in a fast and flexible manner, boosting RIP speed to an outstanding level.

### FIRST DFE-EMBEDDED G7 CERTIFIED SYSTEM

PRISMAsync incorporates an in-RIP G7 calibration method. Without a need for third-party software or complex procedures, print professionals can quickly and easily calibrate their PRISMAsync-driven imagePRESS colour presses to help achieve a near-neutral print condition.

### FLEXIBLE COLOUR CONTROLS

PRISMAsync offers flexible colour correction capabilities such as the CMYK curve editing and digital moiré reduction, with immediate visual feedback via realistic pixel precise previews.



## imagePRESS SERVER H300 v1.0/G100 v1.2

Fiery® technology helps improve efficiency and performance.

### WORK ACROSS PLATFORMS

The imagePRESS Servers integrate smoothly with all your prepress workflows, third-party software, and EFI™ solutions.

### EFFICIENT JOB MANAGEMENT

An intuitive print management interface for Fiery servers, the Command WorkStation® centralises and helps simplify job management. Operators can monitor and direct jobs, automate workflows, and preview and adjust documents.

### SPOT-ON™ COLOUR MATCHING

The powerful Spot-On utility helps remove the guesswork from colour matching, offering an intuitive interface that makes it fast and easy to define or modify spot colours. It eliminates the time-consuming task of looking up CMYK values.

### DIRECT PRINTING FROM MOBILE DEVICES

Enhance press accessibility with the ability to print directly from compatible Apple\* iPad®, iPhone®, iPod touch® and Android\* devices. Using an enterprise's wireless connection (the imagePRESS server should be connected to a wireless access point on the same network as the mobile device) users can print from the native print feature of a mobile device.

\* Supported on Apple devices running iOS 4.2 or later.

\* Requires Fiery Go App (free downloadable application from EFI with limited support.)

## imagePRESS PRINTER KIT

Embedded controller for entry-level production.

Designed for operations that use a printer driver workflow and don't require job or queue management tools, the imagePRESS Printer Kit is a cost-efficient choice for a genuine Adobe® PostScript® controller.



imagePRESS Server H300 v1.0



imagePRESS Server G100 v1.2



# CUSTOMISED SOLUTIONS

## A SUPERB FIT

### EXPAND YOUR OPPORTUNITIES

Highly innovative, imagePRESS C850/C750 colour digital production presses offer end to end solutions and outstanding day to day reliability that can help your operation achieve greater success in its market segment.

With a choice of advanced print controllers and scalable feeding and finishing options, this press is configured to help you surpass your production goals.

Its small footprint and environmentally conscious features make this press a superb fit for almost every operation.



### LONG-SHEET PRINTING

Auto duplex print up to 762mm sheets to help expand application offerings, such as dust jackets and six-page brochures.



#### **STAPLED DOCUMENTS**

Produce stapled documents, such as presentation handouts, of up to 100 sheets, with both corner and double stapling capabilities.



#### **SADDLE-STITCHED BOOKLETS**

In-line saddle-stitching provides up to 100-page\* brochures, catalogues, and programs. Square-fold options and unique Saddle Press technology\* help to limit bowing, so booklets lie flat. In-line creasing† for high-quality half-folding and saddle-stitching significantly reduce paper or toner cracking on the spine.



#### **FULL-BLEED BOOKLETS**

Print booklets in sizes up to 330 X 488 mm and benefit from in-line, front-edge and two-knife trimming for high-quality, full-bleed booklet output.



#### **PERFECTLY BOUND BOOKS**

Deliver soft-cover, glue-bound books of up to 400 pages in-line.



#### **FOLDED BROCHURES**

Produce flyers, mailings, letters, and folded leaflets in-line with the folding unit.



#### **OFF-LINE FINISHING**

Via the High-Capacity Stacker, the imagePRESS C850 and C750 presses output neat stacks of loose leaves that can be unloaded to feed your off-line, post-processing equipment — and all without interrupting print production.



#### **BOUND PRESENTATIONS AND MANUALS**

In-line die punching creates ready to bind documents for plastic comb, velo bind, or color coil binding, eliminating the need for prepunched sheets or off-line hole punching.



#### **ENVELOPES**

Offer complete, end-to-end marketing solutions with the ability to print envelopes in a range of sizes such as Com10, Monarch, ISO-C5, ISO-BS, DL.

\* Requires Booklet Finisher-W1. All paper capacity numbers are based on 80 gsm.

## **TEAMING WITH CANON**

### **A COMPETITIVE ADVANTAGE**

We'll help you increase productivity and improve your bottom line. Our extensive print experience translates to deep insight into industry characteristics and trends as well as customer goals and challenges. Canon's understanding of various printing markets allows us to tailor solutions to meet your specific needs.

### **TOTAL SOLUTIONS**

The Canon portfolio of technology offerings is among the broadest in the industry. From digital, sheet-fed, web-fed, and wide-format systems to inkjet, photo printers, and workflow solutions, Canon has a customised solution exactly right for your business.



# The imagePRESS C850/C750

## SPECIFICATION



### MAIN ENGINE

Technology:	Electrophotography	
Resolution:	Up to 2400 x 2400 dpi	
Halftones:	256-Level Grayscale	
Print Speed	Simplex/Duplex	
	<b>C850</b>	<b>C750</b>
A4:	Up to 85 ipm	Up to 75 ipm
A3:	Up to 43 ipm	Up to 37 ipm
12" x 18":	Up to 40 ipm	Up to 35 ipm
13" x 19":	Up to 38 ipm	Up to 33 ipm
Paper Size :	100 X148 mm to 330X488 mm ( 3.94"X5.83" to 13"X19.2"	
Paper Feeding:		
Standard:	Up to 1,650 Sheets (80 gsm)	
Maximum:	Up to 7,650 Sheets (80 gsm)	
Paper Weight:	52 gsm to 300 gsm	
Envelopes:**	ISO-C5, COM 10, Monarch, DL, 6" x 9", 9" x 12", 10" x 13"	
Duplexing/Perfecting:	Automatic Duplex/Perfect (Any supported stock except envelopes)	
Power Source:	Single-Phase 2 X 240V / 15 A	
Dimensions (H x W x D):	1424 mm x 1530 mm x 934 mm m (Includes Operator Panel)	

### INPUT ACCESSORIES

#### Multi-Drawer Paper Deck-C1

Paper Capacity:	Up to 6000 Sheets (80 gsm)
Paper Size:	B5, B4, A5R, A4R, A4, A3, SRA3, 305 mm x 457 mm, 330 mm x 483 mm
Dimensions (H x W x D):	1040 mm x 950 mm x 797 mm
Power Source:	240V / 10A

#### POD Deck Lite-C1

Paper Capacity:	Up to 3500 Sheets (80 gsm)
Paper Size:	B5, B4, A5R, A4R, A4, A3, SRA3, 305 mm x 457 mm, 330 mm x 483 mm
Envelopes:**	ISO-C5, COM 10, Monarch, DL, 6" x 9", 9" x 12", 10" x 13"
Dimensions: (H x W x D):	572 mm x 717 mm x 686 mm

#### Stack Bypass-B1

Paper Capacity:	Up to 100 Sheets (80 gsm)
Paper Size:	B5, B4, A5R, A4R, A4, A3, SRA3, 305 mm x 457 mm, 330 mm x 483 mm, (Long Sheet up to 762mm**** )
Envelopes:	ISO-C5, COM 10, Monarch, DL, 6" x 9", 9" x 12", 10" x 13"

#### Duplex Color Image Reader-K1

Image Sensor:	CCD
Document Size:	139.7 mm to 432 mm
Resolution:	Up to 600 x 600 dpi, 256 Gradations
Tray Capacity:	Up 300 Sheets (80 gsm)
Scan Speed:	Up to 300 dpi Up to 600 dpi
BW (duplex/simplex):	Up to 200/120 ipm Up to 120/120 ipm
Color (duplex/simplex):	Up to 140/120 ipm Up to 70/70 ipm

### FINISHING ACCESSORIES

#### Multi Function Professional Puncher-A1<sup>■</sup>

Paper Weight:	
Plain:	75 gsm to 300 gsm
Coated:	80 gsm to 300 gsm
Paper Size:	A3, A4, A4R, A5, STMT, 12 x 18, 11 x 17, 9 x 12, 9 x 12R, LGL, LTR, LTRR, SRA3, SRA4, SRA4R
Die Set Patterns:	Loose Leaf 3-Hole/5-Hole, Velo Bind 11-Hole, Plastic Comb 19-Hole, Twin Loop 21-Hole/32-Hole, Color Coil 44- Hole, Crease
Dimensions (H x W x D):	1040 mm x 445 mm x 795 mm
Power Supply:	240V / 10A

#### High-Capacity Stacker-H1

Offset Stack Capacity:	Up to 6,000 sheets (80 gsm)
Top Tray Capacity:	Up to 200 sheets (80 gsm)
Paper Size:	
Paper Weight:	52 gsm to 300 gsm
Max. Connectivity:	1 Unit
Dimensions (H x W x D):	1040 mm x 899 mm x 745 mm
Power Source:	240V / 10 A

#### Staple Finisher-W1/Booklet Finisher-W1

Tray Capacity	
Top Tray:	Up to 1,000 Sheets (80 gsm)
Lower Tray:	Up to 4,000 Sheets (80 gsm)
Saddle-Stitch Tray:	Up to 30 Booklets or Limitless
Staple Positions:	Corner and Double stapling
Paper Weight:	52 gsm to 300 gsm
Paper Size	
Stapling:	A4, B5, LTR, EXEC, A4R, B5R, A3, B4, 11x17, LGL
Saddle Finisher:	A4, B5, LTR, EXEC, A4R, B5R, A3, B4, 11x17, LGL
Stapling Capacity:	Up to 100 Sheets
Booklet Stapling Capacity (80 gsm)	
Uncoated:	Up to 25 Sheets
Coated:	Up to 10 Sheets
V-Folding:	Up to 5 Sheets without Stitch
Dimensions (H x W x D):	1239 mm x 1060 mm x 792 mm
Power Source:	240V / 10A

#### Perfect Binder-E1

Cutting Method:	3 Side Cut / 1 Side Cut / No Cut
Finished Book Size:	Width: 202 to 297mm Length: 137.5 to 216mm
Book Thickness:	10 to 200 Sheets (80 gsm)
Body Paper Weight:	52 gsm to 163 gsm
Cover Paper Weight:	90 gsm to 300 gsm

Trim Range	
Top/Bottom:	6.5 to 39.5 mm
Side:	6.5 to 49.5 mm
Dimensions (H x W x D):	1300 mm x 922 mm x 791 mm
Power Source:	240 V/10 A

### FINISHING ACCESSORIES

#### Booklet Trimmer-F1<sup>▲</sup>

Margin Trimming:	Front-edge Trim
Trim Amount:	2 mm -to 28 mm
Trim Thickness:	50 Sheets (80 gsm)
Paper Weight:	52 gsm to 300 gsm
Output Tray Capacity:	30 Booklets
Dimensions (H x W x D):	1040 mm x 2095 mm x 779 mm

#### Two-Knife Booklet Trimmer-A1<sup>▲▲</sup>

Margin Trimming:	Top and Bottom
Trim Amount:	2mm to 15 mm
Trim Thickness:	50 Sheets (80 gsm)
Paper Weight:	52 gsm to 300 gsm
Dimensions (H x W x D):	1040 mm x 536 mm x 770 mm
Power Supply:	240 V / 10 A

#### Puncher Unit-BS1 (Option for Staple Finisher-W1/Booklet Finisher-W1)

Paper Weight:	52 gsm to 300 gsm
Paper Sizes	
2/4-Hole:	A3,B4,A4,A4R,B5,B5
2/3-Hole:	A3,B4,A4,A4R,B5,B5

#### Document Insertion Unit-N1

Tray Capacity	
Upper Tray:	Up to 200 Sheets (80 gsm)
Lower Tray:	Up to 200 Sheets (80 gsm)
Paper Weight:	52 gsm to 300 gsm
Paper Size:	13"X19", SRA3, 12"X18", A3, A4, A4R, B4, B5, B5R, 11"X17", LGL, LTR, LTRR, EXEC
Power Source:	240V / 10A

#### Paper Folding Unit-J1

Double Parallel Fold:	A4R, LTR-R
C/Accordion Fold:	A4R, LTR-R
Z-Fold:	A3, B4, A4R, 11"X17", LGL, LTR-R
Supported Media	
Weights:	52 gsm to 105 gsm
Power Source:	From Finisher
Dimensions (H x W x D):	1190 mm x 336 mm x 793 mm

#### Plockmatic Binder BLM 35 and BLM 50

Please refer Canon Plockmatic brochure for more detail

### PRINTER CONTROLLERS

Canon RIP:	Canon imagePRESS Printer Kit - D1E
Prismasync Controller:	iPR C850-A1
EFI:	imagePRESS server G100 V1.2 imagePRESS server H300 v1.0

\* Engine cassette supports 52 gsm to 220 gsm.

\*\* Requires Envelope Attachment Kit.

\*\*\* With optional Stack Bypass-C2 and Long Sheet Tray.  
Paper sizes longer than 488 mm can be fed one  
sheet at a time.

▲ Must connect to Booklet Finisher-W1.

▲▲ Must connect to Booklet Trimmer-F1

■ Not available at launch.

[canon.com.au/business](http://canon.com.au/business)

Follow us on Twitter @CanonBusinessAU

1800 444 199

**Canon**

*achieve more.*