

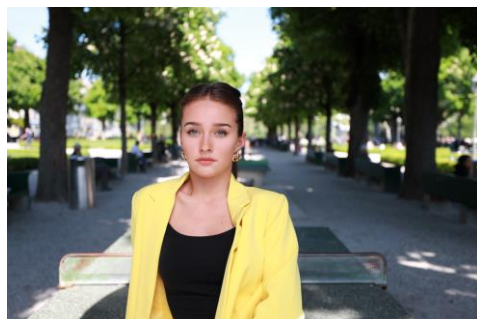
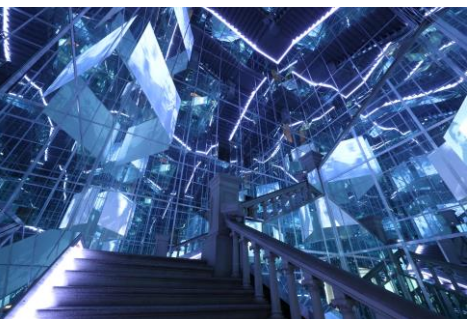


RF 15-35mm f2.8L IS USM

- Large f/2.8 aperture with 5 stop Image Stabilizer
- Nano USM for high speed AF during stills shooting and smooth AF for movies
- Lens control ring for custom control over selected settings
- Ultra-wide 15-35mm angle for your creative expression
- Edge to edge sharpness throughout the zoom range
- L Series durability and operability
- Compatible with R series cameras.



Canon



TECHNICAL SPECIFICATIONS

RF 15-35 f/2.8 L IS USM	
Mount	RF
Focal length	15-35 mm
Maximum aperture	f/2.8
Minimum aperture	f/22
Minimum focusing distance	0.28m
Maximum magnification	0.21x
Lens construction	16 elements in 12 groups
Aspherical lens	3
Special low dispersion glass	2 UD
Special coating	SWC, ASC, fluorine coating
Glass	Three glass-molded aspherical
Dust resistance, water resistance	Supported
Aperture blades	9 (circular)
IS (CIPA standard correction effect)	Yes (5 stops)
Focus Drive System	NANO USM
Filter diameter	82 mm
Maximum diameter and length	approx. 88.5 mm x 126.8 mm
Weight	Approx. 840 g



ACCESSORIES



Lens cap
E-82II



Lens hood
EW-88F



Lens pouch
LP-1222

*For more information visit
canon.com.au
canon.co.nz*

Canon